

APPLICATIONS

For E-scooter and E-motorcycle charging and discharging, swappable battery applications



ADVANTAGES

- 3 power + 10 signal pins layout
- 1mm self-floating
- 3.6mm Newsok power terminal - Chogori Patented technology with high reliability, high current transmission capacity
- Bi-direction insertion
- ≥5000 times mating cycles
- RoHS and Reach Compliant

SPECIFICATIONS

Mating Cycle: ≥5000 Times
 Pullout Force: <100N
 Wire processing: Revert/ Solder

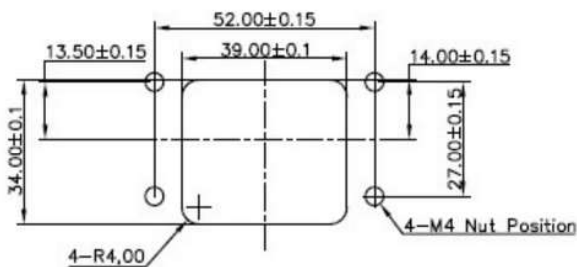
Voltage Rating: 72V DC
 Current Rating: Power 40A; Signal 5A
 Peak Current : Power 60A 30S
 Withstand Voltage: 1500V AC
 Insulation Resistance: >200MΩ

Operating Temperature: -40°C to 105°C
 IP Rating: IPX7 Battery Side
 Salt Spray: 48h
 Flammability Rating: UL94V-0

Guide Post: Stainless Steel
 Wire Gauge:
 Power 6AWG/ Max
 Signal 20AWG/ Max

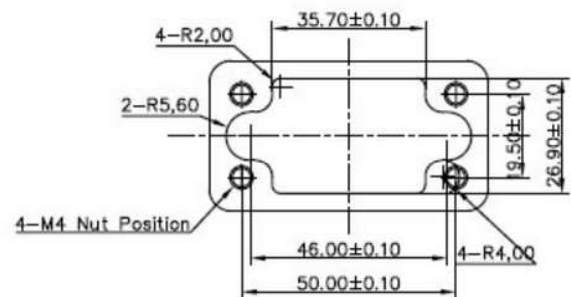
DIMENSIONS

Vehicle part



Panel Thickness: ≤5mm

Battery part



Panel Thickness: ≤3mm

TEMPERATURE CURVE

Current 40A; Wire 6AWG

